



# AIRCRAFT HYDRAULIC GROUND SUPPORT EQUIPMENT

## OIL FILTERING & FILLING

### MINERAL

MIL-PRF-5606,  
MIL-PRF-83282,  
MIL-PRF-87257 standards

### ESTER PHOSTATE

HYJET IV  
HYJET V  
SKYDROL IV  
SKYDROL V

# FILTERING UNIT

## OUT1500 SERIES



ABC Filtering unit are suitable for:

- ✦ Oil filtering
- ✦ Filling tank
- ✦ Check filtration level

**5.28 Usgpm**  
**20 l/min**

**Mineral**  
**Or**  
**Ester Phosphate**

The **OUT1500 SERIES** is a decontamination bench used for measurements of fluid contamination and fluid filtering. The bench is studied and designed to ensure the safety to the operator, the equipment and the environment.

Fitering unit OUT1500		Max pressure	Max flow
OUT1500-	-M (Mineral)	<b>87 Psi</b> <b>6 Bar</b>	<b>5.28 usgpm</b> <b>20 l/min</b>
	-EP (Ester phosphate)		

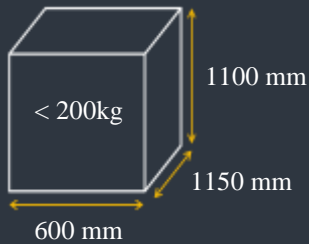


Appareillages et  
Bancs hydrauliques  
Châtelleraudais  
33 rue Joseph Cugnot  
86100 Châtelleraut  
France  
☎ +33 (0)549 200 369  
✉ +33 (0)549 854 509  
📧 [contact@abc-essais.com](mailto:contact@abc-essais.com)  
[www.abc-essais.com](http://www.abc-essais.com)



# AIRCRAFT HYDRAULIC GROUND SUPPORT EQUIPMENT

## OVERALL DIMENSIONS



### Hydraulic hoses:

- 5 meters (without quick-disconnect in option)
- Power supply cable: 5 meters (without plug)

## OPERATING CONDITIONS

Operating temperature: from +10°C to +45°C

Indoor use (maintenance hangar)

Easily movable by one operator

Power supply: 230V, 50Hz, +Ground (other upon request)

Commands circuit upon 24V (safety voltage)

## Main Characteristics

The chassis is made of a welded stainless steel structure movable thanks to two locking swivel casters and two rigid ones. All commands are simple. The complete hydraulic system is mounted on a special tray to collect possible leaks and thus help preserve the environment.

## Standard accuracy (other upon request)

- ✦ Sound level : less than 75 dbA
- ✦ Filtering : 5 micron

## Options available (other upon request)

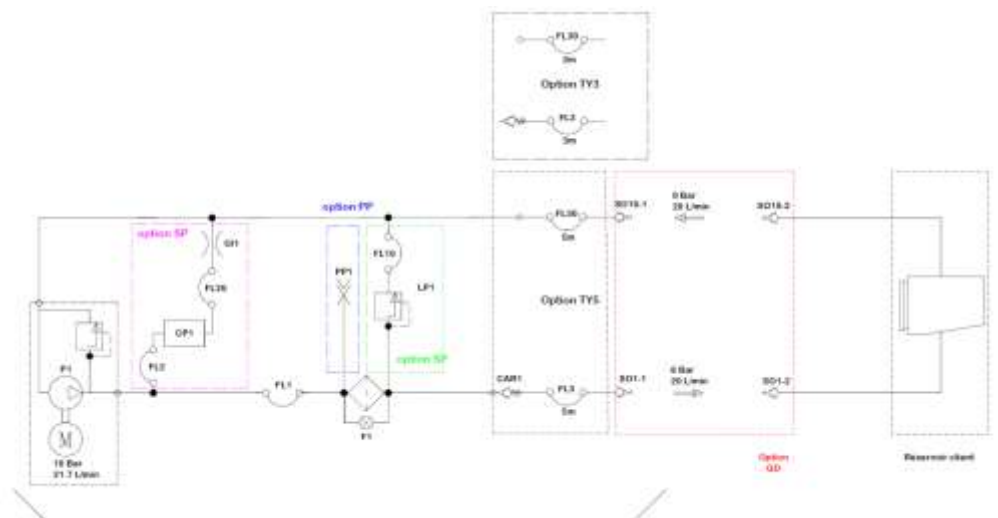
- ✦ QD : quick-disconnect
- ✦ TY3 : Hydraulic hose length 3 meters
- ✦ TY5 : Hydraulic hose length 5 meters
- ✦ EC : Electrical cable length 10 meters
- ✦ PP : Sampling port
- ✦ PC : Particle counter
- ✦ SP : Pressure safety

## Hydraulic parameters

- ✦ Mineral oil based HGTU such as MIL-PRF-5606, MIL-PRF-83282, MIL-PRF-87257 standards (other upon request)
- ✦ Ester phosphate oil based HGTU such as Hyjet IV & V Skydrol IV & V
- ✦ Single power system with one supply line
- ✦ Gear pump
- ✦ Pressure: up to 87 psi / max Flow range
- ✦ Non-stop fluid decontamination level in class 5 (or better) upon NAS 1638 standards using filter with clogging indicator
- ✦ Class level measurement

To order:

OUT1500 - M - TY - QD  
Option Mineral



Appareils et  
Bancs hydrauliques  
Châtelleraudais  
33 rue Joseph Cugnot  
86100 Châtelleraut  
France  
☎ +33 (0)549 200 369  
☎ +33 (0)549 854 509  
✉ contact@abc-essais.com  
www.abc-essais.com